



SPECIALISTS IN INDUSTRIAL COATINGS  
& WEAR PROTECTION

# INDUSTRIAL EPOXY SOLUTIONS

PROTECT. REPAIR.  
EXTEND SERVICE LIFE.



ADHESIVES



WEAR COMPOUNDS



CERAMIC TILE SYSTEMS



CRUSHER BACKING



REPAIR PUTTIES



## EPOXY PRODUCT CATALOGUE 2026



013 101 3833



[sales@cotexind.co.za](mailto:sales@cotexind.co.za)



[www.cotexind.co.za](http://www.cotexind.co.za)



28C Stevenson Street  
Emalahleni

# INDEX

## ELI-BOND

FR964LC - EPOXY ADHESIVE	<b>PAGE 5</b>
FR961 - STANDARD CERAMIC EPOXY TILE ADHESIVE SAND FILLED	<b>PAGE 6</b>
FR961TA - STANDARD EPOXY TILE ADHESIVE	<b>PAGE 7</b>
FR961TAF - FAST SET EPOXY TILE ADHESIVE	<b>PAGE 8</b>
FR961FS - FAST SET EPOXY TILE ADHESIVE SAND	<b>PAGE 9</b>
FR606FS - PULLEY LAGGING ADHESIVE FAST SETTING	<b>PAGE 10</b>
FR972AHT - HEAT RESISTANT TILE ADHESIVE	<b>PAGE 11</b>
FR1000A - HEAT RESISTANT ADHESIVE	<b>PAGE 12</b>
FR914C - GASKET COMPOUND	<b>PAGE 13</b>
FR166 - G P ADHESIVE CLEAR	<b>PAGE 14</b>
FR845C1 - G P ADHESIVE CLEAR FAST SETTING	<b>PAGE 15</b>
FR917A - ROAD STUD ADHESIVE	<b>PAGE 16</b>

## ELI-COTE

**PAGE 17**

FR985B - BRUSHABLE ABRASION RESISTANT GELCOAT	<b>PAGE 18</b>
FR1011 - BRUSHABLE CERAMIC COATING	<b>PAGE 19</b>
FR1012LV - ABRASION RESISTANT MORTAR	<b>PAGE 20</b>
FR1008D - STANDARD TO HIGH WEAR RESISTANT EPOXY COMPOUND (ANGULAR ALUMINA)	<b>PAGE 21</b>
FR1013 - HIGH WEAR RESISTANT EPOXY COMPOUND	<b>PAGE 22</b>
FR1013ME - STANDARD WEAR RESISTANT EPOXY	<b>PAGE 23</b>
FR1008HT3 - HIGH WEAR ABRASION RESISTANT EPOXY MORTAR, HEAT RESISTANT	<b>PAGE 24</b>
FR1008D1LV - STANDARD TO HIGH WEAR RESISTANT EPOXY COMPOUND (SPHERICAL ALUMINA)	<b>PAGE 25</b>

# INDEX

## ELI-FIL

**PAGE 26**

FR179 - METAL FILLED EPOXY PUTTY	<b>PAGE 27</b>
FR912 - METAL FILLED EPOXY PUTTY	<b>PAGE 28</b>
FR913 - QUICK SET STEEL EPOXY PUTTY	<b>PAGE 29</b>
FR955 - ALUMINIUM FILLED EPOXY PUTTY	<b>PAGE 30</b>
FR983 - SUPER STEEL ABRASION RESISTANT EPOXY PUTTY	<b>PAGE 31</b>
FR308 - EPOXY FILLING PUTTY	<b>PAGE 32</b>
FR986A - MARINE PUTTY/WET SURFACE REPAIR PUTTY	<b>PAGE 33</b>
FR517FII - CONCRETE REPAIR RESIN	<b>PAGE 34</b>

## ELI-DUR

**PAGE 35**

FR70P - PU RUBBER REPAIR PASTE	<b>PAGE 36</b>
FR70L - PU RUBBER REPAIR LIQUID	<b>PAGE 37</b>

## ELI-CRUSH

**PAGE 38**

FR1009 - HIGH IMPACT CRUSHER BACKING RESIN	<b>PAGE 39</b>
FR867 - STANDARD CRUSHER BACKING RESIN	<b>PAGE 40</b>
FR453/974/B - POLYURETHANE CRUSHER BACKING RESIN	<b>PAGE 41</b>

## ELITE-CARES

PROTECT YOURSELF	<b>PAGE 42</b>
WORK SAFELY	<b>PAGE 42</b>
PERSONAL HYGIENE	<b>PAGE 42</b>
FIRST AID	<b>PAGE 43</b>
FIRES	<b>PAGE 43</b>



## ELI-BOND

**Ceramic tile adhesive epoxy** - Epoxy used for adhering Alumina ceramic tiles to metal surfaces, used in various environments and applications.





**MAXIMUM  
OPERATING  
TEMP**



**60°C**

## FR964LC - EPOXY ADHESIVE

The Eli-Bond FR/964/LC Epoxy Adhesive shows outstanding bond strength and adhesion on a multitude of materials, especially metal to metal, concrete, and even difficult surfaces like PVC and treated Polyethylene. Since the FR/964/LC Adhesive is supplied in a paste form, the product finds equal applications on horizontal as well as vertical surfaces.

**WORK TIME  
POT LIFE**



**± 20 min**

## Mixing and Application

<b>APPLICATION:</b>	By spatula or trowel	
<b>VISCOSITY / 25°C:</b>	Thixotropic Paste	
<b>COLOUR:</b>	Resin:	Beige
	Hardener:	Black
	Mixed colour:	Light Grey
<b>MIXING RATIO:</b>	100 Parts Resin	
<b>BY WEIGHT OR VOLUME:</b>	90 – 100 Parts Hardener	
<b>SPECIFIC GRAVITY / 25°C:</b>	1.8 g/cm <sup>3</sup>	

**GEL  
TIME**



**2 hrs**

Technical data sheets &  
MSDS available on request  
013 101 3833 | [sales@cotexind.co.za](mailto:sales@cotexind.co.za)

**SETTING  
TIME**



**6hrs**




**MAXIMUM  
OPERATING  
TEMP**

**80°C**

## FR961 - STANDARD CERAMIC EPOXY TILE ADHESIVE SAND FILLED

The Eli-Bond FR/961 Tile Adhesive shows good bond strength and adhesion on Metal, Ceramic, Concrete

**WORK TIME  
POT LIFE**

**± 20 min**

### Mixing and Application

<b>APPLICATION:</b>	By spatula	
<b>VISCOSITY / 25°C:</b>	Thixotropic Paste	
<b>COLOUR:</b>	Resin:	Beige
	Hardener:	Dark Grey
	Mixed colour:	Grey
<b>MIXING RATIO:</b>	100 Parts Resin	
<b>BY WEIGHT OR VOLUME:</b>	50 Parts Hardener	
<b>SPECIFIC GRAVITY / 25°C:</b>	1.70– 1.75 g/cm <sup>3</sup>	

**GEL  
TIME**

**50 min**

Technical data sheets & MSDS available on request

013 101 3833 | [sales@cotexind.co.za](mailto:sales@cotexind.co.za)

**PRACTICAL  
CURE TIME**

**8 hrs**




## FR961TA - STANDARD EPOXY TILE ADHESIVE

The Eli-Bond FR/961/TA Tile Adhesive shows good bond strength and adhesion on Metal, Ceramic, Concrete

### Mixing and Application

<b>APPLICATION:</b>	By spatula	
<b>VISCOSITY / 25°C:</b>	Thixotropic Paste	
<b>COLOUR:</b>	Resin:	Off White
	Hardener:	Beige
	Mixed colour:	Off White
<b>MIXING RATIO:</b> <b>BY WEIGHT OR VOLUME:</b>	100 Parts Resin	
	50 Parts Hardener	
<b>SPECIFIC GRAVITY / 25°C:</b>	1.70–1.75 g/cm <sup>3</sup>	

Technical data sheets & MSDS available on request  
 013 101 3833 | [sales@cotexind.co.za](mailto:sales@cotexind.co.za)

**MAXIMUM OPERATING TEMP**



**80°C**

**WORK TIME POT LIFE**



**15 min**

**GEL TIME**



**35 min @ 5mm**

**PRACTICAL CURE TIME**



**8hrs @ 5mm**



**MAXIMUM  
OPERATING  
TEMP**

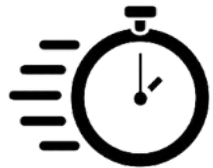


**80°C**

## FR961 TAF - FAST SET EPOXY TILE ADHESIVE

The Eli-Bond FR/961/TAF Tile Adhesive shows good bond strength and adhesion on Metal, Ceramic, Concrete

**WORK TIME  
POT LIFE**



**10 min**

### Mixing and Application

<b>APPLICATION:</b>	By spatula	
<b>VISCOSITY / 25°C:</b>	Thixotropic Paste	
<b>COLOUR:</b>	Resin:	Off White
	Hardener:	Beige
	Mixed colour:	Off White
<b>MIXING RATIO:</b>	100 Parts Resin	
<b>BY WEIGHT OR VOLUME:</b>	100 Parts Hardener	
<b>SPECIFIC GRAVITY / 25°C:</b>	1.70–1.75 g/cm <sup>3</sup>	

Technical data sheets & MSDS available on request

013 101 3833 | [sales@cotexind.co.za](mailto:sales@cotexind.co.za)

**GEL  
TIME**



**20 min  
@ 5mm**

**PRACTICAL  
CURE TIME**



**4 hrs @ 5mm**



## FR961FS - FAST SET EPOXY TILE ADHESIVE SAND FILLED

The Eli-Bond FR/961/FS Tile Adhesive shows good bond strength and adhesion on Metal, Ceramic, Concrete.

The product is suitable for applications on horizontal as well as vertical surfaces.

### Mixing and Application

<b>APPLICATION:</b>	By spatula or trowel	
<b>VISCOSITY / 25°C:</b>	Semi-Thixotropic Paste	
<b>COLOUR:</b>	Resin:	Off White
	Hardener:	Pink
	Mixed colour:	Off White
<b>MIXING RATIO:</b>	100 Parts Resin	
<b>BY WEIGHT OR VOLUME:</b>	40 - 50 Parts Hardener	
<b>SPECIFIC GRAVITY / 25°C:</b>	1,60-1,65 g/cm <sup>3</sup>	

Technical data sheets & MSDS available on request  
 013 101 3833 | [sales@cotexind.co.za](mailto:sales@cotexind.co.za)

**MAXIMUM OPERATING TEMP**



**70°C**

**WORK TIME POT LIFE**



**5 - 10 min**

**GEL TIME**



**25 min @ 5mm**

**PRACTICAL CURE TIME**



**6hrs @ 5mm**





**MAXIMUM  
OPERATING  
TEMP**



**70°C**

## **ELI-BOND FR606FS PULLEY LAGGING ADHESIVE FAST SETTING**

A semi-flexible, fast setting, impact resistant, ambient temperature curing, two component Epoxy Adhesive.

**WORK TIME  
POT LIFE**



**15 min**

### **Mixing and Application**

<b>APPLICATION:</b>	By trowel	
<b>VISCOSITY / 25°C:</b>	Paste	
<b>COLOUR:</b>	Resin:	White
	Hardener:	Beige – Off-White
	Mixed colour:	Off-White
<b>MIXING RATIO:</b>	By Weight	By Volume
	100 Parts Resin	100 parts Resin
	50 Parts Hardener	50 parts Hardener
<b>SPECIFIC GRAVITY / 25°C:</b>	1.2 – 1.3 g/cm <sup>3</sup>	

**GEL  
TIME**



**55 min @ 2mm**

Technical data sheets &  
MSDS available on request  
013 101 3833 | [sales@cotexind.co.za](mailto:sales@cotexind.co.za)

**PRACTICAL  
CURE TIME**



**24 hrs @ 2mm**



## FR972AHT - HEAT RESISTANT TILE ADHESIVE

The Eli-Bond FR/972/A HT Adhesive shows outstanding bond strength and adhesion on Metal, Ceramic, Concrete. The product is suitable for applications on horizontal as well as vertical surfaces.

The Adhesive has specifically been designed to bond Ceramic Tiles/Liners to surfaces that are subject to elevated temperatures. Eli-Bond FR/972/A HT is suitable for applications subject to 120°C or short time exposures up to 150°C peak temperature.

### Mixing and Application

<b>APPLICATION:</b>	By spatula or trowel	
<b>VISCOSITY / 25°C:</b>	Thixotropic Paste	
<b>COLOUR:</b>	Resin:	Light Grey
	Hardener:	Amber - Trans
	Mixed colour:	Light Grey
<b>MIXING RATIO:</b>	By Weight	By Volume
	100 Parts Resin	100 parts Resin
	16 Parts Hardener	25 parts Hardener
<b>SPECIFIC GRAVITY / 25°C:</b>	1.5 – 1.55 g/cm <sup>3</sup>	

Technical data sheets & MSDS available on request

013 101 3833 | [sales@cotexind.co.za](mailto:sales@cotexind.co.za)

**MAXIMUM OPERATING TEMP**



**130°C**

**WORK TIME POT LIFE**



**15 min**

**GEL TIME**

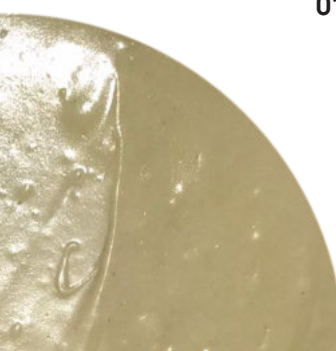


**25 min @ 5mm**

**PRACTICAL CURE TIME**



**8 hrs @ 5mm**





## FR1000A HEAT RESISTANT ADHESIVE

The Eli-Bond FR/1000/A adhesive retains its outstanding adhesion and bond-strength on most inorganic surfaces at temperatures up to 180°C.

Typical applications would include the bonding of metal to metal, ceramic tiles to metal and general bonding applications - subject to elevated temperatures

**MAXIMUM OPERATING TEMP**



**180°C**

**WORK TIME POT LIFE**



**15 min**

## Mixing and Application

<b>APPLICATION:</b>	By spatula or trowel
<b>COLOUR:</b>	Resin: Grey
	Hardener: Off White
	Mixed colour: Light Grey
<b>MIXING RATIO:</b>	100 Parts Resin
<b>BY WEIGHT OR VOLUME:</b>	40 Parts of Hardener
<b>COVERAGE:</b>	Mixed System: 1.45 – 1.6 g/cm <sup>3</sup>

**GEL TIME**



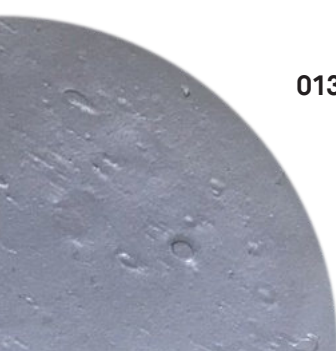
**1½ - 2 Hours**

**SETTING TIME**



**3½ - 4 Hours**

Technical data sheets & MSDS available on request  
 013 101 3833 | [sales@cotexind.co.za](mailto:sales@cotexind.co.za)





## FR914C - GASKET COMPOUND

Jointing compound used for sealing low pressure pipes and cyclone parts

### Mixing and Application

<b>APPLICATION:</b>	By spatula or trowel	
<b>VISCOSITY / 25°C:</b>	Thixotropic Paste	
<b>COLOUR:</b>	Resin:	Grey
	Hardener:	Clear Liquid
	Mixed colour:	Grey
<b>MIXING RATIO:</b>	<b>By Weight:</b>	<b>By Volume:</b>
	100 Parts of Resin	100 Parts of Resin
	9 Parts Hardener	13-14 Parts Hardener
<b>SPECIFIC GRAVITY / 25°C:</b>	1.6–1.7g/cm <sup>3</sup>	

Technical data sheets & MSDS available on request

013 101 3833 | [sales@cotexind.co.za](mailto:sales@cotexind.co.za)

**MAXIMUM OPERATING TEMP**



**80°C**

**WORK TIME POT LIFE**



**15 min**

**GEL TIME**



**40 min**

**SETTING TIME**



**4 Hours @ 2mm**





## FR166 - G P ADHESIVE CLEAR

Eli-Bond FR/166 is a room temperature curing, general purpose adhesive which shows outstanding adhesion and bond strength on cleaned and roughened organic or inorganic surfaces. A strong and lasting bond is produced on substrates such as various metals, wood, asbestos, concrete, brick, glass, ceramics and retreated plastics and rubber.

### Mixing and Application

<b>APPLICATION:</b>	By brush or spatula or pouring	
<b>VISCOSITY / 25°C:</b>	Fluid	
<b>COLOUR:</b>	Mixed colour:	Amber - Trans
<b>MIXING RATIO:</b>	<b>By Weight:</b>	<b>By Volume:</b>
	1 Part Resin	1 Part Resin
	1 Part Hardener	1 Part Hardener
<b>SPECIFIC GRAVITY / 25°C:</b>	1.6–1.7g/cm <sup>3</sup>	

Technical data sheets & MSDS available on request  
 013 101 3833 | [sales@cotexind.co.za](mailto:sales@cotexind.co.za)

**MAXIMUM OPERATING TEMP**



**80°C**

**WORK TIME POT LIFE**



**30 min**

**GEL TIME**



**60 min**

**PRACTICAL CURE TIME**



**± 24 Hours**



## FR845C1 - G P ADHESIVE CLEAR FAST SETTING

Eli-Bond C-1 shows excellent adhesion on the following materials: Concrete, Rock, Brick, Asbestos, Cement, Earth ware, Slate, Tile, Metal, Wood, Cardboard, Glass, Hard plastics. Adhesion tests are advisable on vulcanised Rubber, Plastics, Foams and pre-treated Polyethylene and PVC (Individual tests are recommended)

### Mixing and Application

<b>APPLICATION:</b>		
<b>VISCOSITY / 25°C:</b>	Semi-Thixotropic	
<b>COLOUR:</b>	Resin: White / Clear	Hardener: Beige
<b>MIXING RATIO:</b>	<b>By Weight:</b>	<b>By Volume:</b>
	1 Part Resin	1 Part Resin
	1 Part Hardener	1 Part Hardener
<b>SPECIFIC GRAVITY / 25°C:</b>	Resin: 1.19 g/cm <sup>3</sup> Hardener: 1.07 g/cm <sup>3</sup>	

Technical data sheets & MSDS available on request  
013 101 3833 | [sales@cotexind.co.za](mailto:sales@cotexind.co.za)

MAXIMUM  
OPERATING  
TEMP



60°C

WORK TIME  
POT LIFE



1 min

GEL  
TIME



3 min

SETTING  
TIME



5 min

PRACTICAL  
CURE TIME



2 - 4 Hours



## FR917A - ROAD STUD ADHESIVE

The easy handling characteristics and the custom made pack of the Eli-Bond FR/917A adhesive allows for an uncomplicated and speedy bonding operation of a conventional road stud, e.g. ceramic, acrylic, glass onto bituminous and concrete roads.

### Mixing and Application

<b>APPLICATION:</b>	By Spatula	
<b>VISCOSITY / 25°C:</b>	A semi thixotropic adhesive	
<b>COLOUR:</b>	Resin:	Black
	Hardener:	Black
	Mixed colour:	Black
<b>MIXING RATIO:</b>	<b>By Weight:</b>	<b>By Volume:</b>
	100 parts of Resin	100 parts of Resin
	50 parts of Hardener	50 parts of Hardener
<b>SPECIFIC GRAVITY / 25°C:</b>	1.6 – 1.7 g/cm <sup>3</sup>	
<b>YIELD PER 1 LITRE</b>	Depending on road surface and type of road stud: 15 – 20 road studs can be bonded with 1 litre of FR/917/A adhesive	

Technical data sheets & MSDS available on request  
 013 101 3833 | [sales@cotexind.co.za](mailto:sales@cotexind.co.za)

**MAXIMUM OPERATING TEMP**



**80°C**

**WORK TIME POT LIFE**



**15 min**

**SETTING TIME**



**90 min**

**PRACTICAL CURE TIME**

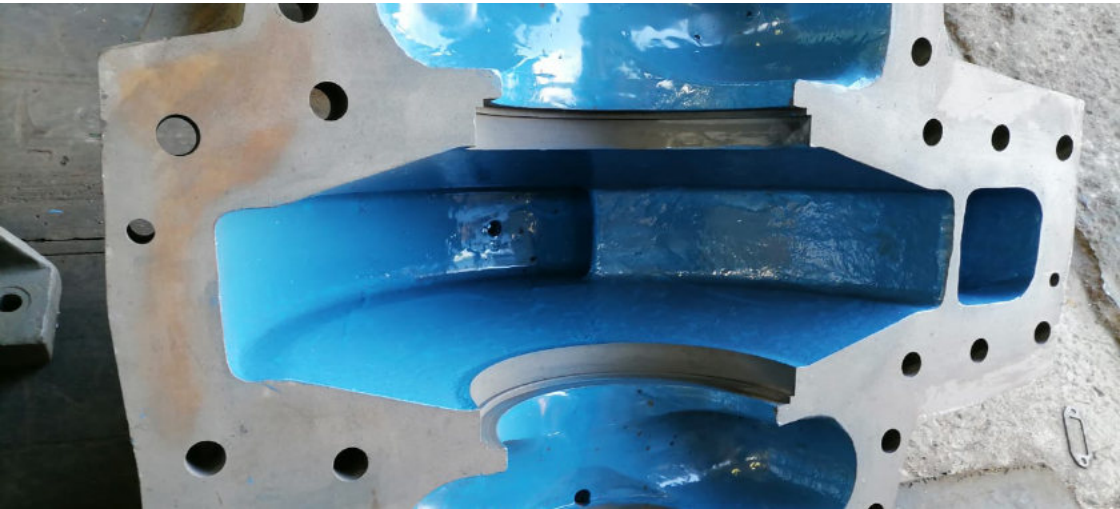


**120 min**



# ELI-COTE

**Wear resistant Epoxy Compound** - Epoxy used to create a wear resistant lining on metal surfaces.





## FR985B - BRUSHABLE ABRASION RESISTANT GELCOAT

Eli-Cote FR/985 is a blue coloured Epoxy Gelcoat with good abrasion resistance.

### Mixing and Application

<b>APPLICATION:</b>	Brush	
<b>VISCOSITY / 25°C:</b>	Resin:	Blue
	Hardener:	Clear
<b>MIXING RATIO:</b>	By Weight:	By Volume:
	17 Parts Hardener	26 Parts Hardener
	100 Parts Resin	100 Parts Resin
<b>COVERAGE/585g PACK</b>	0.4 m <sup>2</sup> (1 mm thick coating)	

Technical data sheets & MSDS available on request

013 101 3833 | [sales@cotexind.co.za](mailto:sales@cotexind.co.za)

**MAXIMUM OPERATING TEMP**



**60°C**

**WORK TIME POT LIFE**



**10 min**

**GEL TIME**



**25 min @ 1mm**

**SETTING TIME**



**120min @ 1mm**



## FR1011 - BRUSHABLE CERAMIC COATING

Eli-Cote FR1011 Brushable Ceramic coating is a two-part, quick setting epoxy compound containing ceramic fillers.

FR1011 has been developed for the protection of surfaces subject to wear, abrasion and chemical attack.

The paint-on capability of FR/1011 makes it a convenient, easy-to-use alternative to traditional rubber lining.

### Mixing and Application

<b>APPLICATION:</b>	Brush	
<b>VISCOSITY / 25°C:</b>	Resin:	White
	Hardener:	Clear
<b>MIXING RATIO:</b>	By Weight:	
	9 Parts Hardener	17 Parts Hardener
	100 Parts Resin	100 Parts Resin
<b>COVERAGE/585g PACK</b>	1.8kg/m <sup>2</sup> (1 mm thick coating)	

Technical data sheets & MSDS available on request

013 101 3833 | [sales@cotexind.co.za](mailto:sales@cotexind.co.za)

**MAXIMUM OPERATING TEMP**



**85°C**

**WORK TIME POT LIFE**



**10 min**

**GEL TIME**



**30 min @ 5mm**

**SETTING TIME**



**120min @ 1mm**



## FR1012LV - ABRASION RESISTANT MORTAR

The Eli-Cote FR/1012/LV quick setting wear compound has been designed for the protection of wet surfaces subjected to high wear, particularly on areas where solids or slurries cause severe abrasion. The mortar provides a long-lasting lining to metal and concrete surfaces.

### Mixing and Application

<b>APPLICATION:</b>	By spatula, trowel or hand	
<b>COLOUR:</b>	Resin:	Light grey
	Hardener:	Red Oxide
	Mixed colour:	Pink
<b>MIXING RATIO:</b>	100 Parts Resin	
<b>BY WEIGHT OR VOLUME:</b>	50 Parts Hardener	
<b>COVERAGE:</b>	2.0 – 2.05 g/cm <sup>3</sup>	

Technical data sheets & MSDS available on request  
 013 101 3833 | [sales@cotexind.co.za](mailto:sales@cotexind.co.za)

**MAXIMUM OPERATING TEMP**



**85°C**

**WORK TIME POT LIFE**



**15 min**

**GEL TIME**



**+/- 1 Hour**

**SETTING TIME**



**2 - 2½ HOURS @5 MM**





## FR1008D - STANDARD TO HIGH WEAR RESISTANT EPOXY COMPOUND (ANGULAR ALUMINA)

The Eli-Cote FR/1008/D has been designed for the protection of surfaces subjected to high wear, particularly on areas where solids or slurries cause severe abrasion. The mortar provides a long lasting lining to metal and concrete surfaces. The soft thixotropic texture of the mortar allows for easy mixing and makes the product suitable for horizontal, as well as vertical applications. Typical applications include wear resistant lining for chutes, pump casings, slurry pumps, impellers, fans, pipe elbows, hoppers, vibrating feeders, etc.

### Mixing and Application

<b>APPLICATION:</b>	By spatula, trowel or hand (use protective gloves)	
<b>COLOUR:</b>	Resin:	Black
	Hardener:	Iron Oxide Red
	Mixed colour:	Brown
<b>MIXING RATIO: BY WEIGHT OR VOLUME:</b>	100 Parts Resin	
	50 Parts Hardener	
<b>COVERAGE:</b>	1 Litre = 1.9 kg / m <sup>2</sup> (1 mm)	
	6 Litres = 111.4 kg / 6m <sup>2</sup> (1 mm)	

Technical data sheets & MSDS available on request  
013 101 3833 | [sales@cotexind.co.za](mailto:sales@cotexind.co.za)

**MAXIMUM OPERATING TEMP**



**75°C**

**WORK TIME POT LIFE**



**15 min**

**GEL TIME**



**60 min**

**SETTING TIME**



**120min @ 5mm**





## FR1013 - HIGH WEAR RESISTANT EPOXY COMPOUND

The Eli-Cote FR/1013 has been designed for the protection of surfaces subjected to high wear, particularly on areas where solids or slurries cause severe abrasion. The mortar provides a long lasting lining to metal and concrete surfaces.

The soft thixotropic texture of the mortar allows for easy mixing and makes the product suitable for horizontal, as well as vertical applications.

### Mixing and Application

<b>APPLICATION:</b>	By spatula, trowel or hand (use protective gloves)	
<b>COLOUR:</b>	Resin:	Grey (Paste)
	Hardener:	Brown – Transparent (Liquid)
	Mixed colour:	Grey (Paste)
<b>MIXING RATIO: BY WEIGHT OR VOLUME:</b>	100 Parts Resin	
	6 Parts Hardener (Weight) 13 Parts Hardener (Volume)	
<b>COVERAGE:</b>	1 Litre = 2 kg / m <sup>2</sup> (1 mm)	
	6 Litres = 12 kg / 6m <sup>2</sup> (1 mm)	

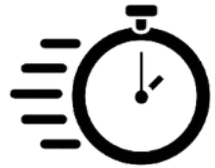
Technical data sheets & MSDS available on request  
 013 101 3833 | [sales@cotexind.co.za](mailto:sales@cotexind.co.za)

**MAXIMUM  
OPERATING  
TEMP**



**100°C**

**WORK TIME  
POT LIFE**



**15 min**

**GEL  
TIME**



**25 min  
@ 5mm**

**SETTING  
TIME**



**40 min @ 5  
mm**





## FR1013ME STANDARD WEAR RESISTANT EPOXY COMPOUND

Wear Resistant Epoxy Compound. A fast setting, ambient temperature curing Epoxy Repair / Maintenance Compound containing abrasion resistant fillers - suitable for application under cold and wet conditions.

### Mixing and Application

<b>APPLICATION:</b>	By spatula, trowel or hand	
<b>COLOUR:</b>	Resin:	Charcoal
	Hardener:	Brown – Transparent
	Mixed colour:	Charcoal
<b>MIXING RATIO:</b>	<b>BY WEIGHT OR VOLUME:</b>	
	100 Parts Resin 10 Parts Hardener	
<b>COVERAGE:</b>	2.0 – 2.05 g/cm <sup>3</sup>	

Technical data sheets & MSDS available on request  
013 101 3833 | [sales@cotexind.co.za](mailto:sales@cotexind.co.za)

**MAXIMUM OPERATING TEMP**



**120°C**

**WORK TIME POT LIFE**



**30 min**

**GEL TIME**



**40 min @ 5mm**

**SETTING TIME**



**1-1¼ hours @ 5 mm**





**MAXIMUM  
OPERATING  
TEMP**



**120°C**

**FR1008HT3 - HIGH WEAR  
ABRASION RESISTANT EPOXY  
MORTAR, HEAT RESISTANT**

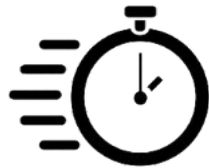
The Eli-Cote FR/1008HT3 has been designed for the protection of surfaces subjected to high wear, particularly on areas where solids or slurries cause severe abrasion. The mortar provides a long lasting lining to metal and concrete surfaces.

The soft thixotropic texture of the mortar allows for easy mixing and makes the product suitable for horizontal, as well as vertical applications.

**Mixing and Application**

<b>APPLICATION:</b>	By spatula, trowel	
<b>COLOUR:</b>	Resin:	Grey
	Hardener:	Black
	Mixed colour:	Metal grey
<b>MIXING RATIO:</b>	<b>BY WEIGHT OR VOLUME:</b>	
	100 Parts Resin 25 Parts Hardener	
<b>COVERAGE:</b>	1.85 – 1.9 g/cm <sup>3</sup>	

**WORK TIME  
POT LIFE**



**20 min**

**GEL  
TIME**



**1½ – 1¾ hrs  
@ 5mm**

**SETTING  
TIME**



**2½ - 3 Hours  
@ 5 mm**

Technical data sheets &  
MSDS available on request  
013 101 3833 | [sales@cotexind.co.za](mailto:sales@cotexind.co.za)





## FR1008D1LV - STANDARD TO HIGH WEAR RESISTANT EPOXY COMPOUND (SPHERICAL ALUMINA)

The Eli-Cote FR/1008/D1/LV has been designed for the protection of surfaces subjected to high wear, particularly on areas where solids or slurries cause severe abrasion. The mortar provides a long lasting lining to metal and concrete surfaces.

The soft thixotropic texture of the mortar allows for easy mixing and makes the product suitable for horizontal, as well as vertical applications.

A two part, ambient temperature curing Epoxy Repair/Maintenance Compound containing abrasion resistant fillers

### Mixing and Application

<b>APPLICATION:</b>	By spatula, trowel or hand (use protective gloves)	
<b>COLOUR:</b>	Resin:	White
	Hardener:	Iron Oxide Red
	Mixed colour:	Pink
<b>MIXING RATIO:</b>	<b>By Weight:</b>	
	100 Parts Resin	
	30 Parts Hardener	
	<b>By Volume:</b>	
	35 – 37 Parts Hardener	
<b>COVERAGE:</b>	1 Litre = 1.95 kg / m <sup>2</sup> (1 mm)	
	3 Litres = 6 kg / 3m <sup>2</sup> (1 mm)	

Technical data sheets & MSDS available on request

013 101 3833 | [sales@cotexind.co.za](mailto:sales@cotexind.co.za)

**MAXIMUM OPERATING TEMP**



**85°C**

**WORK TIME POT LIFE**



**15 min**

**GEL TIME**

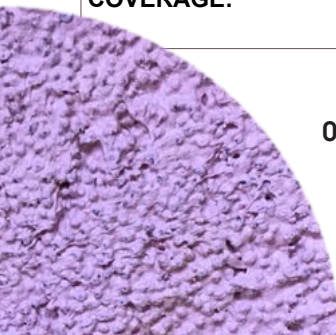


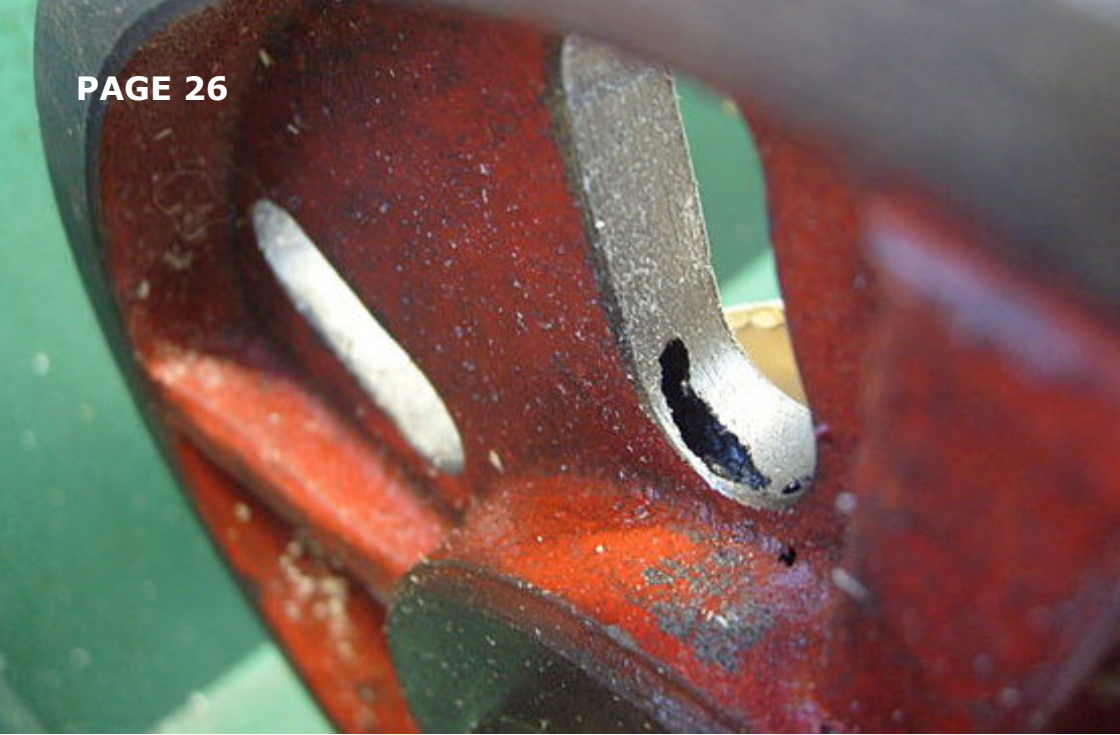
**+/- 1 Hour**

**SETTING TIME**



**2-2½ hours@ 5 mm**





## ELI-FIL

**Metal & Marine filling Putty** - Putty used in conjunction with metallic, concrete & fibreglass objects to do repairs





## FR179 - METAL FILLED EPOXY PUTTY

Eli-Fil can be used in conjunction with any metallic object, e.g. to repair broken castings, tanks, parts of machinery, to level irregularities and fill blow holes to build up worn parts and to bond various metals, iron, steel, aluminium. It is also suitable for making tools, jigs, models, etc.

**MAXIMUM  
OPERATING  
TEMP**



**95°C**

**GEL  
TIME**



**45 - 60 min  
@ 5mm**

**SETTING  
TIME**



**1½ - 2 hrs  
@ 5mm**

### Mixing and Application

<b>APPLICATION:</b>	By spatula	
<b>VISCOSITY / 25°C:</b>	Non-sagging paste	
<b>MIXING RATIO:</b>	<b>By weight:</b>	100 parts of Resin "A"
		25 parts of Hardener "B"
	<b>By Volume:</b>	100 parts of Resin "A"
		30 parts of Hardener "B"
	<b>Measurement:</b>	Resin 1 x 12,5 ml spoon = 20g
Hardener 1 x 2 ml spoon = 5g		
<b>SPECIFIC GRAVITY / 25°C:</b>	1.65 – 1.7 g/cm <sup>3</sup>	

Technical data sheets & MSDS available on request  
013 101 3833 | [sales@cotexind.co.za](mailto:sales@cotexind.co.za)





## FR912 - STEEL FILLED EPOXY PUTTY

Eli-Fil FR912 Steel Putty can be used for emergency and permanent repairs of broken castings, tanks, parts of machinery, to level irregularities and fill blow holes, to build up worn parts and to bond various metals, ie. iron, steel aluminium. The product is also suitable for making tools, jigs, models, etc.

### Mixing and Application

<b>APPLICATION:</b>	By spatula	
<b>VISCOSITY / 25°C:</b>	Non-sagging Paste	
<b>MIXING RATIO:</b>	<b>By Weight:</b>	<b>By Volume:</b>
	100 Parts of Resin	100 Parts of Resin
	11 Parts of Hardener	35 Parts of Hardener
<b>COLOUR:</b>	Metallic grey	
<b>SPECIFIC GRAVITY / 25°C:</b>	Resin	2.8 – 3 g/cm <sup>3</sup>
	Hardener	0.97 – 1 g/cm <sup>3</sup>
	Mixed Compound	2.7 – 2.8 g/cm <sup>3</sup>

Technical data sheets & MSDS available on request  
 013 101 3833 | [sales@cotexind.co.za](mailto:sales@cotexind.co.za)

**MAXIMUM OPERATING TEMP**



**120°C**

**GEL TIME**



**1½ - 1¾ Hours @ 5mm**

**SETTING TIME**



**3 - 4 hrs @ 5mm**



## FR913 - QUICK SET STEEL EPOXY PUTTY

**ENGINEERING / MINING APPLICATIONS:** The use of the FR/913 "quick set" Steel Putty is recommended where emergency repairs must be undertaken and time does not allow the application of the standard Eli-Fil range of Metal Filling Putties. Typical applications include repairs on damaged- leaking pipes, pumps, tanks and machine parts, to build up worn parts and linings in pumps, on impellers, shafts.

**FOUNDRY APPLICATIONS:** The paste like viscosity combined with excellent adhesion and strength on all ferrous and non-ferrous surfaces makes the steel putty an ideal product to fill blow holes, incorrectly drilled holes and surface blemishes in ferrous and non-ferrous castings and patterns.

### Mixing and Application

<b>APPLICATION:</b>	By spatula	
<b>VISCOSITY / 25°C:</b>	Mixed Compound: Paste	
<b>MIXING RATIO:</b>	<b>By Weight:</b>	<b>By Volume:</b>
	100 Parts of Resin	100 Parts of Resin
	21-22 Parts of Hardener	55-58 Parts of Hardener
<b>COLOUR:</b>	<b>Resin:</b> Metallic grey	<b>Hardener:</b> Clear
<b>SPECIFIC GRAVITY / 25°C:</b>	Resin	2.9 – 3 g/cm <sup>3</sup>
	Hardener	1.0 – 1.15 g/cm <sup>3</sup>
	Mixed Compound	2.9 – 2.95 g/cm <sup>3</sup>

Technical data sheets & MSDS available on request

013 101 3833 | [sales@cotexind.co.za](mailto:sales@cotexind.co.za)

**MAXIMUM OPERATING TEMP**



**100°C**

**GEL TIME**



**3 min @ 5mm**

**SETTING TIME**



**6 min @ 5mm**



**MAXIMUM  
OPERATING  
TEMP**



**120°C**

**FR955 - ALUMINIUM FILLED  
EPOXY PUTTY**

An ambient temperature curing, two component Epoxy Putty formulated with an Aluminium Filler.

**WORK TIME  
POT LIFE**



**90 min**

**Mixing and Application**

<b>APPLICATION:</b>	By spatula	
<b>VISCOSITY / 25°C:</b>		
<b>MIXING RATIO:</b>	<b>By Weight:</b>	<b>By Volume:</b>
	100 Parts of Resin	12,5 ml spoon = 23.5g Resin
	10-11 Parts of Hardener	2 ml spoon = 2.5 g Hardener
<b>COLOUR:</b>	<b>Resin:</b> Aluminium grey	<b>Hardener:</b> Red
<b>SPECIFIC GRAVITY / 25°C:</b>	1.9 – 2.0 g/cm <sup>3</sup>	

**GEL  
TIME**



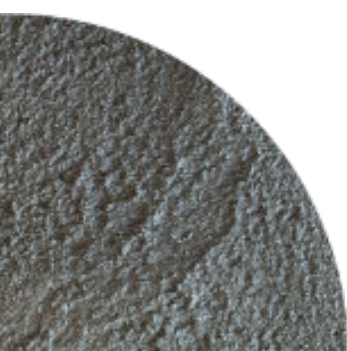
**2½ – 3 hrs  
@ 5mm**

Technical data sheets & MSDS available on request  
013 101 3833 | [sales@cotexind.co.za](mailto:sales@cotexind.co.za)

**SETTING  
TIME**



**5 hours  
@ 5 mm**





## FR983 - SUPER STEEL ABRASION RESISTANT EPOXY PUTTY

Eli-Fil FR/983 Steel Putty can be used for emergency and permanent repairs of broken castings, tanks, parts of machinery, to level irregularities and fill blow holes, to build up worn parts and to bond various metals, i.e. iron, steel aluminium. The product is also suitable for making tools, jigs, models, etc.

### Mixing and Application

<b>APPLICATION:</b>	By spatula	
<b>VISCOSITY / 25°C:</b>	Thixotropic Paste	
<b>MIXING RATIO:</b>	<b>By Weight:</b>	<b>By Volume:</b>
	100 Parts of Resin	100 Parts of Resin
	9 Parts of Hardener	19 - 20 Parts of Hardener
<b>COLOUR:</b>	Resin:	Black
	Hardener:	White
	Mixed Compound:	Metallic Grey
<b>SPECIFIC GRAVITY / 25°C:</b>	Resin	2.5 – 2.6 g/cm <sup>3</sup>
	Hardener	1.0 – 1.1 g/cm <sup>3</sup>
	Mixed Compound	2.4 – 2.5 g/cm <sup>3</sup>
<b>PRACTICAL WORKING LIFE / 25°C:</b>	450g Mix: 15 Minutes	

Technical data sheets & MSDS available on request  
013 101 3833 | sales@cotexind.co.za

**MAXIMUM OPERATING TEMP**



**100°C**

**WORK TIME POT LIFE**



**15 min**

**GEL TIME**



**20 min @ 5mm**

**SETTING TIME**



**35 min @ 5mm**



## FR308 - EPOXY FILLING PUTTY

High performance non sagging epoxy putty that sets rock hard. Once cured the repaired area can be machined, drilled and tapped. Available in Black or White. Once cured it can be painted.

**MAXIMUM  
OPERATING  
TEMP**



**90°C**

## Mixing and Application

<b>APPLICATION:</b>	By hand, spatula, knife	
<b>VISCOSITY / 25°C:</b>	Non-sagging putty	
<b>MIXING RATIO:</b>	<b>By Weight:</b>	<b>By Volume:</b>
	1 Part Resin A	1 Part Resin A
	1 Part Hardener B	1 Part Resin A
<b>COLOUR:</b>	Black or White	

**GEL  
TIME**



**1 – 1½ hrs**

Technical data sheets &  
MSDS available on request  
013 101 3833 | [sales@cotexind.co.za](mailto:sales@cotexind.co.za)

**SETTING  
TIME**



**2 – 2½ hrs**



## FR986A - MARINE PUTTY/WET SURFACE REPAIR PUTTY

The Eli-Fil FR/986 marine putty can be applied under adverse cold environmental conditions to damp - wet surfaces, e.g. concrete, rock, metal, etc.

Eli-Fil FR/986 is a filler and fibreglass reinforced two component Epoxy Repair Putty.

**WORK TIME  
POT LIFE**



**30 min**

**GEL  
TIME**



**1 hour**

### Mixing and Application

<b>APPLICATION:</b>	By spatula	
<b>VISCOSITY / 25°C:</b>	Thixotropic Paste	
<b>MIXING RATIO:</b>	<b>By Weight:</b>	<b>By Volume:</b>
	1 Part Resin A	1 Part Resin A
	1 Part Hardener B	1 Part Hardener B
<b>COLOUR:</b>	Resin:	White
	Hardener:	Beige
	Mixed:	White
<b>COVERAGE:</b>	1kg pack covers 0,35m <sup>2</sup> - 0,55 m <sup>2</sup>	

Technical data sheets & MSDS available on request

**SETTING TIME  
UNDER WATER**



**5 hrs**

**SETTING TIME  
ABOVE WATER**



**3 - 3½ hrs**





## FR517FII - CONCRETE REPAIR RESIN

Eli-Fil FR/517/FII is used for securing machinery and bolts into place, jointing concrete, pipes, repair work on roads, water tanks, bridges and floors and bonding new concrete to old concrete.

Eli-Fil FR/517/FII is a non-sagging Epoxy Mortar which does not contain any solvents, has therefore very low shrinkage and does not constitute a fire risk. The compound shows good adhesion and bond strength on concrete, brick, stone and ferrous metals.

The impact and bond strength exceeds the strength of a good quality concrete

### Mixing and Application

<b>APPLICATION:</b>	By spatula or trowel	
<b>VISCOSITY / 25°C:</b>	Non-flowing mortar	
<b>MIXING RATIO:</b>	<b>By Weight:</b>	<b>By Volume:</b>
	1 Part Resin	1 Part Resin
	1 Part Hardener	
<b>COLOUR:</b>	Resin:	1 Part Hardener White
	Hardener:	Grey
	Mixed:	Light Grey
<b>COVERAGE:</b>	1,9 kg/m <sup>2</sup> in a 1mm thick application	

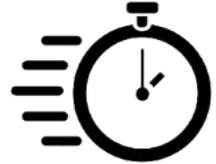
Technical data sheets & MSDS available on request  
 013 101 3833 | [sales@cotexind.co.za](mailto:sales@cotexind.co.za)

**MAXIMUM OPERATING TEMP**



**80°C**

**WORK TIME POT LIFE**



**30 min**

**GEL TIME**



**50 min**

**SETTING TIME**



**65 min**





## ELI-DUR

**Rubber repair paste & liquid** - On the spot rubber repair system.





## FR70P - PU RUBBER REPAIR PASTE

Once crosslinked the Eli-Dur FR/70 paste produces an ambient temperature curing high grade rubber with hardness of Shore A 60 – 65. The product shows excellent flexibility combined with good tear strength and abrasion resistance. Eli-Dur can be used for indoor and outdoor applications.

Eli-Dur FR/70 Paste has been formulated for applications on vertical surfaces for "on the spot" conveyor belt and rubber repair. Protection against chemical attack and corrosion. Protection against abrasion on tanks, chutes, wear plates, conveyor troughs, pipes and concrete.

### Mixing and Application

<b>APPLICATION:</b>	By spatula	
<b>COLOUR:</b>	<b>Resin:</b>	Black
	<b>Hardener:</b>	Brown
<b>MIXING RATIO:</b>	<b>By Weight</b>	<b>By Volume</b>
	100 Parts Resin	100 Parts Resin
	20 Parts Hardener	16 Parts Hardener
<b>COVERAGE:</b>	0.9 m <sup>2</sup> /kg (1mm Thick Application)	

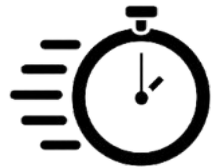
Technical data sheets & MSDS available on request  
 013 101 3833 | [sales@cotexind.co.za](mailto:sales@cotexind.co.za)

**MAXIMUM OPERATING TEMP**



**80°C**

**WORK TIME POT LIFE**



**7 min**

**GEL TIME**

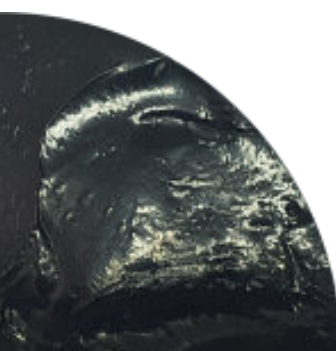


**10 min @ 5mm**

**SETTING TIME**



**120 min @ 5 mm**





## FR70L - PU RUBBER REPAIR LIQUID

Once crosslinked the Eli-Dur FR/70 produces an ambient temperature curing high grade rubber with hardness of Shore A 65 - 70. The product shows excellent flexibility combined with good tear strength and abrasion resistance.

### Mixing and Application

<b>APPLICATION:</b>	By spatula	
<b>COLOUR:</b>	<b>Resin:</b>	Black
	<b>Hardener:</b>	Brown
<b>MIXING RATIO:</b>	<b>By Weight</b>	<b>By Volume</b>
	100 Parts Resin	100 Parts Resin
	26 Parts Hardener	22 Parts Hardener
<b>COVERAGE:</b>	0.8 - 0.9 m <sup>2</sup> /kg (1mm Thick Application)	

Technical data sheets & MSDS available on request  
013 101 3833 | [sales@cotexind.co.za](mailto:sales@cotexind.co.za)

**MAXIMUM OPERATING TEMP**



**80°C**

**WORK TIME POT LIFE**



**6 min**

**GEL TIME**



**10 min @ 5mm**

**SETTING TIME**



**120 min @ 5 mm**



# ELI-CRUSH

Crusher backing resins





## ELI-CRUSH FR1009 HIGH IMPACT CRUSHER BACKING RESIN

A two pack, ambient temperature curing Epoxy Resin

### Mixing and Application

<b>APPLICATION:</b>	By casting	
<b>COLOUR:</b>	<b>Resin:</b>	
	<b>Hardener:</b>	
<b>MIXING RATIO:</b>	<b>By Weight</b>	<b>By Volume</b>
	100 Parts Resin	100 Parts Resin
	11 Parts Hardener	20 Parts Hardener
<b>IMPACT RESISTANCE:</b>	10 kJ/m <sup>2</sup>	
<b>COVERAGE:</b>	Mixed Resin: 1,7 – 1,72 g/cm <sup>3</sup>	

Technical data sheets & MSDS available on request  
013 101 3833 | [sales@cotexind.co.za](mailto:sales@cotexind.co.za)

**WORK TIME  
POT LIFE**



**5 - 10 min  
10kg pack**



**ELI-CRUSH FR867  
STANDARD CRUSHER  
BACKING RESIN**

Eli-Crush FR/867 is an ambient temperature curing, crusher backing resin with good impact resistance and very low shrinkage

- Easy pourability good penetration - even at lower temperatures
- Minimal filler settlement in containers - easy stirability
- Fast reactivity - good through curing properties at lower temperatures
- Safety; Eli-Crush does not contain solvents (100% solids) non-toxic and non-dermatitic at ambient temperatures

**Mixing and Application**

<b>APPLICATION:</b>	By casting	
<b>COLOUR:</b>	<b>Resin:</b>	Yellow / Brown
	<b>Hardener:</b>	Reddish Amber Clear
<b>MIXING RATIO:</b>	<b>By Weight</b>	<b>By Volume</b>
	100 Parts Resin	100 Parts Resin
	6 Parts Hardener	10-11 Parts Hardener
<b>IMPACT RESISTANCE:</b>	5 - 6 kJ/m <sup>2</sup>	
<b>COVERAGE:</b>	Mixed Resin: 1.65 – 1.7 g/cm <sup>3</sup>	

**WORK TIME  
POT LIFE**



**5 - 10 min  
10kg pack**

Technical data sheets & MSDS available on request  
013 101 3833 | [sales@cotexind.co.za](mailto:sales@cotexind.co.za)



## ELI-CRUSH FR453/974B

## POLYURETHANE CRUSHER BACKING RESIN

Eli-Crush FR/453/974/B is a filler extended Crusher Backing Resin with excellent impact resistance and exceptional low shrinkage.

- High Impact Strength
- Low Viscosity and easy pourability - even at lower temperatures
- Minimal filler settlement in containers
- Fast reactivity - good through curing properties at lower temperatures
- Good Heat Resistance
- Safety: Eli-Crush FR/453/974/B Resin is non-volatile - 100% solids, non-toxic, non-dermatitic at ambient temperatures

### Mixing and Application

<b>APPLICATION:</b>	By casting	
<b>COLOUR:</b>	<b>Resin:</b>	Electro Brown
	<b>Hardener:</b>	Brown
<b>MIXING RATIO:</b>	<b>By Weight</b>	<b>By Volume</b>
	100 Parts Resin	100 Parts Resin
	25 Parts Hardener	35 Parts Hardener
<b>IMPACT RESISTANCE:</b>	10 kJ/m <sup>2</sup>	
<b>COVERAGE:</b>	Mixed Resin: 1.5 – 1.55 g/cm <sup>3</sup>	

**WORK TIME  
POT LIFE**



**10 min  
10kg pack**

Technical data sheets & MSDS available on request  
013 101 3833 | [sales@cotexind.co.za](mailto:sales@cotexind.co.za)

# COMMON SENSE ABOUT HANDLING EPOXY RESINS

## PROTECT YOURSELF

- Work in a ventilated space
- Wear a respiratory mask
- Protect your eyes
- Protect your skin
- Cure in a ventilated area

If exposed to fumes, spray mist or splashes is liable to occur, wear a face shield and respiratory mask. Protect you skin with suitable barrier creams, protective safety gloves, protective clothing and an apron.



## WORK SAFELY!

### Keep the work area clean and tidy

- Keep the work area clean
- Ensure that adequate ventilation is provided especially in confined working areas. Local extraction may be necessary where there is a concentration of fumes
- A supply of skin cleaning preparations, paper towels and adequate washing facilities should be readily available
- Use disposable containers and equipment where possible
- Keep tools clean
- Use waste bins with disposable liners
- Do not eat, drink or smoke in the work area

## PERSONAL HYGIENE

### Wash and clean carefully with soap and warm water

- After finishing work
- After any skin contact with epoxies
- Prior to using the lavatory
- Prior to eating, drinking or smoking

### Do not wash with solvents

- Cleansing creams may be a useful aid to personal hygiene
- Refatting creams may help to prevent skin dryness
- Contaminated clothing should be dry cleaned before re use
- Use disposable towels





## What are epoxy resins?

Epoxy resins are chemicals which may be supplied as liquids, solids or solutions. When cured by mixing and reacting with a hardener, they are converted to solid thermoset materials used as coating or bonding agents for many materials such as steel, sand, concrete, wood and plastics.

Cured epoxy resins possess an outstanding combination of properties including mechanical strength, heat resistance and flexibility as well as good impact, corrosion and chemical resistance.

## Where are epoxy resins used?

Epoxies find a wide range of applications in many major industries such as construction, electrical, automotive, aviation, engineering etc.

## Safe handling

Epoxies are reactive chemicals which require correct handling to ensure that they are used safely. This means avoiding direct exposure of the body via skin contact, inhalation, or ingestion (by mouth). Ways of achieving this are outlined in this leaflet in particular, skin contact should be avoided since this can lead to irritation and, in some cases, to skin sensitization.

These are general safety recommendations. The user should also read any specific safety instructions provided by the resin supplier.

## FIRST AID

### Skin/eyes

If skin contact with epoxies occurs, wash the affected areas carefully, several times. Reapply protective creams.

### Inhalation

If the user is affected by inhalation of vapour or spray mist, remove the user from the area to an open area with fresh air. Seek medical advice.

## FIRES

Chemical fires need to be extinguished with foam or carbon dioxide, not with water or carbon tetrachloride type extinguishers. Wear respiratory and eye protection while extinguishing fires involving epoxies.



# COTE X INDUSTRIES

SPECIALISTS IN INDUSTRIAL COATINGS  
& WEAR PROTECTION

# 50 YEARS OF EPOXY EXCELLENCE

MANUFACTURED IN SOUTH AFRICA | TRUSTED GLOBALLY



Elite Chemicals is a South African manufacturer of world-class epoxy systems serving the mining, engineering and civil industries.

With over **50 years** of manufacturing experience, Elite Chemicals has developed a comprehensive range of wear protection, repair and bonding solutions trusted throughout Africa and internationally.

Local technical support, stock availability and proven performance ensure you receive the right epoxy solution for the toughest applications.



EXTEND  
EQUIPMENT LIFE



REDUCE  
DOWNTIME



IMPROVE  
PRODUCTIVITY



LOWER  
MAINTENANCE COSTS

013 101 3833

sales@cotexind.co.za

www.cotexind.co.za

28C Stevenson Street,  
Emalahleni

QUALITY PRODUCTS • TECHNICAL EXPERTISE • PROVEN RESULTS

PROUDLY SOUTH AFRICAN

